



PO Box 550 Claresholm, AB T0L 0T0
273129 Hwy 520 West
Phone: (403) 625-3351
www.mdwillowcreek.com

June 2018 Volume **10** Issue **2**

Tax Appeal Deadline— AUGUST 7th, 2018

Rate payers have a 67 day time period or filing an appeal of your tax assessment.

***Note:** Please review your concerns with the assessor prior to filing your appeal with: **Benchmark Assessment Consultants**



Assessment Inquiries:

Benchmark Assessment Consultants Inc.

Adam Martin, Assessor

1-800-633-9012 or 403-381-0535

Fees: Formal Alberta Gov. Assessment Review Board Complaint:

Residential / Farmland — \$50 per parcel

Non-Residential — \$250 per parcel

***NOTE:** All of this information can be found on the insert,

Assessment Notice, that was mailed out with the taxes.

For an tax questions or information on Tax Installment Payment Plan (TIPPs)

Check our website or contact the MD Tax Clerk:

Direct: 403-625-3351 ext. 226 or Email: taxes@mdwillowcreek.com

DATES TO REMEMBER:

June 1st

Tax Notices Mailed

June 13th

Agriculture Service Board (ASB) & Council Meeting

June 20th

Municipal Planning Commission (MPC) & Council Meeting

July 11th

ASB & Council Meeting

July 18th

(MPC) & Council Meeting

August 7th

Tax Appeal Deadline

October 31st

Due Date for tax payment to avoid penalties

As of **Jan. 1, 2019** the Municipal District of Willow Creek will no longer be **mailing** cash receipts for any monetary transactions. The MD is looking to update all customer contact information. To help with the process, a current email address is required as the MD will send digital receipts to the email on file. Please fill out the form available on our website.

Paperless Cash Receipts Program Effective January 1, 2019



METHODS OF PAYMENT ACCEPTED:

Telephone or internet banking through your financial institution
Your roll # is your account #. Refer to our website for helpful tips

Debit, Cash, or Cheque*

* Please make cheques payable to
Municipal District of Willow Creek No. 26
and include your roll number on it.

AGRICULTURE SERVICE BOARD INFORMATION

UPCOMING EVENTS:

Bear Safety Workshop for Farm & Ranch Families

Join us for an afternoon to learn about bear safety. This workshop is targeted specifically at safety concerns for southwestern Alberta farms and ranch owners, workers, and family members (all ages welcome) as they go about their daily routines, living and working in close proximity with grizzly and black bears. Learn:

- ⇒ How to minimize attractants around your ranch and yard
- ⇒ How to avoid bear encounters
- ⇒ What to do when you do encounter a bear
- ⇒ How to correctly identify dangerous bear behavior
- ⇒ How to respond appropriately

FRIDAY JUNE 22ND

1:30 - 5:00PM

MD OF WILLOW CREEK ADMIN.
BUILDING

273129 HWY 520 WEST

(CLARESHOLM AIRPORT)



Thanks to our generous supporters there is no cost for the workshop, but pre-registration is required.

~ **Please register by end of day Tuesday, June 19th** ~

To register contact:

MD of Willow Creek Agriculture Service Board



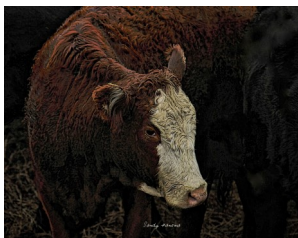
Waterton Biosphere Reserve invites you to share your thoughts about their Carnivores and Communities Program

To complete the survey, visit their website at: www.watertonbiosphere.com/cacpsurvey

15th Annual Southern Alberta Grazing School for Women

COST \$100

July 24th-25
Stavely
Community
Hall



- ◆ Grazing Principals Practices
- ◆ Verified Sustainable Beef Program
- ◆ Range & Riparian Health
- ◆ Hands-on Plant ID
- ◆ Utilizing Electric Fence

To Register Contact: Kristi Stebanuk (403) 382-0927

Email: kstenbanuk@cowsandfish.org or

Online registration: 2018sags.eventbrite.com

AGRICULTURE SERVICE BOARD INFORMATION

ATTENTION LANDOWNERS:

Landowners and occupiers are responsible for controlling noxious weeds and destroying prohibited noxious weeds under the **Alberta Weed Control Act**. Listed plants in the Act cause problems for the environment, health or economy. Know your responsibilities under the Act. Regardless of where plants are located, prevention is always the most effective approach in dealing with invasive plants.

- ◆ Learn to identify invasive plants.
- ◆ Be alert for invasive plants and respond early when they are found.
- ◆ Reduce the introduction of invasive plants as well as the reproduction and movement of their seeds and plant parts.
- ◆ Reduce soil disturbance, which makes openings where invasive plants can establish.
- ◆ Use effective, appropriate methods to control invasive plants.
- ◆ Contact your Agricultural Fieldman, Carla at 403-625-3351 ext 229, if you have questions.
- ◆ For information on Aquatic Invasive Species and Terrestrial Invasive Species go to: <https://abinvasives.ca/>



ASB is hosting a

Weed Identification & Information Workshop

Workshop Details:

June 20th 9am—Noon.

- Located at Midnight Stadium in Fort MacLeod.
- 1 Hour in-class discussion and 2 Hour on-site field tour.
- Lunch included.
- No Cost.
- Registration is required, contact the Ag. Service Board at 403-625-3351 ext. 260 or email: kelli@mdwillowcreek.com or carla@mdwillowcreek.com

In Partnership with:



Save the Date: August 15th—17th in Fort MacLeod, AB

- JIM GERRISH GRAZING SCHOOL -

In Partnership with:



**More Details & Registration Information will follow shortly*

EMERGENCY SERVICES



SAFE COMMUNITIES Alert Network



Don't be the last to know

Emergencies Happen. Know what's happening and what to do about it.

Sign up to stay informed during emergencies

Stay safe and informed during emergencies, like floods, tornadoes, wildfires, hazardous material spills, with the Safe Communities Alert Network. Choose how you wish to be contacted in the event of an emergency situation. You'll receive official, reliable information sent to your phone, email, and text message accounts whenever a fire, flood, severe weather (tornado), hazardous material spill or other emergency may affect you or your family.

How do you sign up for the Safe Communities Alert Network?
Instructions and FAQ's are located on the Town's website.

Subscribe today & learn more:

www.SCANalerts.ca

Emergencies Happen. Know what's happening and what to do about it.

Sign up to stay informed during emergencies

Stay safe and informed during emergencies, like floods, tornadoes, wildfires, hazardous material spills, with the Safe Communities Alert Network. Choose how you wish to be contacted in the event of an emergency situation. You'll receive official, reliable information sent to your phone, email, and text message accounts whenever a fire, flood, severe weather (tornado), hazardous material spill or other emergency may affect you or your family.

How do you sign up for the Safe Communities Alert Network?

Instructions and FAQ's are located on the Town's website.

Alberta Emergency Management



**IS YOUR FAMILY
PREPARED?**

PUBLIC WORKS

MD of Willow Creek RECYCLING PROGRAM



Recycle Trailer available on the east side of the administration building (Claresholm Airport).

ACCEPTED: cardboard (broken down), mixed paper, magazines, tin cans and plastic*.

* Plastic must be CLEAN and NO Plastic Bags!

NOT ACCEPTED: Glass, Styrofoam, garbage, toxic material or fluids.



A REMINDER TO DRIVER'S:

THE **MAXIMUM** SPEED LIMIT* ON A ROADWAY THAT IS LOCATED OUTSIDE AN URBAN AREA
(ie: MD GRAVEL ROAD'S) IS **80 km/hr** UNLESS A LOWER SPEED IS POSTED

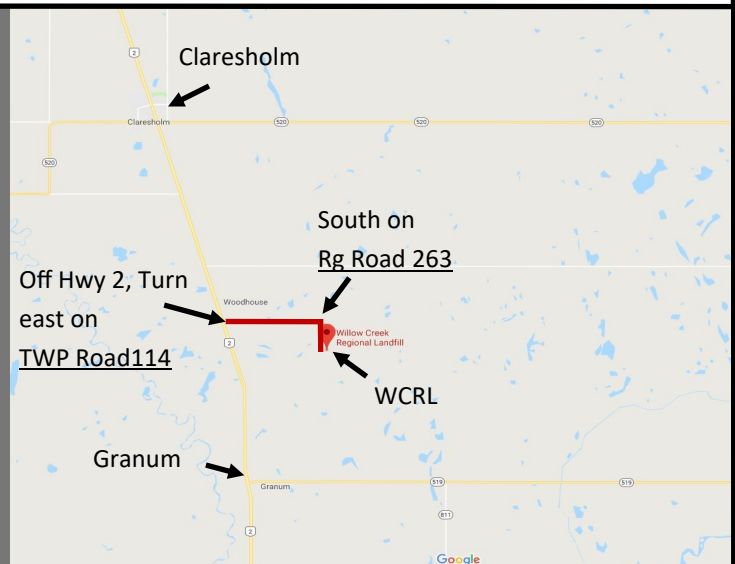
*Speed limits do not indicate the maximum speed drivers should travel. They are the maximum speed permitted when conditions are ideal. Any speed that is unsafe for the current conditions is illegal.

Visit www.transportation.alberta.ca for further detailed information

WILLOW CREEK REGIONAL LANDFILL (WCRL)

LOCATED AT: 113053 Range Road 263
(South of Claresholm)

HOURS AND DAYS OPEN CAN VARY SO PLEASE
CALL PRIOR TO VISIT AT 403-687-2603



PLANNING & DEVELOPMENT

PLANNING ANY DEVELOPMENT OR BUSINESS PROJECT THIS YEAR?

What you need to know!!!

Development Department provides the following services:

Issuing of Development Permits	Subdivision Inquires
Land Use Bylaw Amendments	Safety Code Inquiries
Issuing of Business Licence	Planning & Development Inquiries
Certificate of Compliance	Public Hearing / MPC Meeting Inquiries

- Building or moving on a residence?
- Planning a farmstead?
- Building a garage?
- Home-based business?
- Medical Cannabis Facility?
- Wind/Solar project?
- Redesignating lands for development?
- Commercial or Industrial Operations?
- Intensive Agricultural or Horticulture Operations?

REMEMBER TO

**CALL THE MD DEVELOPMENT OFFICE
TO ARRANGE FOR AN APPOINTMENT**

Phone: (403) 625-3351 Ext. 235



UPDATE:

Land Use Bylaw No. 1616 is currently under review by Council.

Watch for a public hearing date announcement in your local newspaper,
MD Website and newsletter.